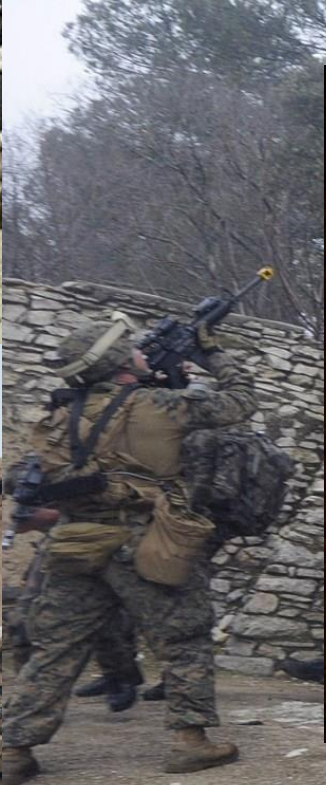


Project Lockdown





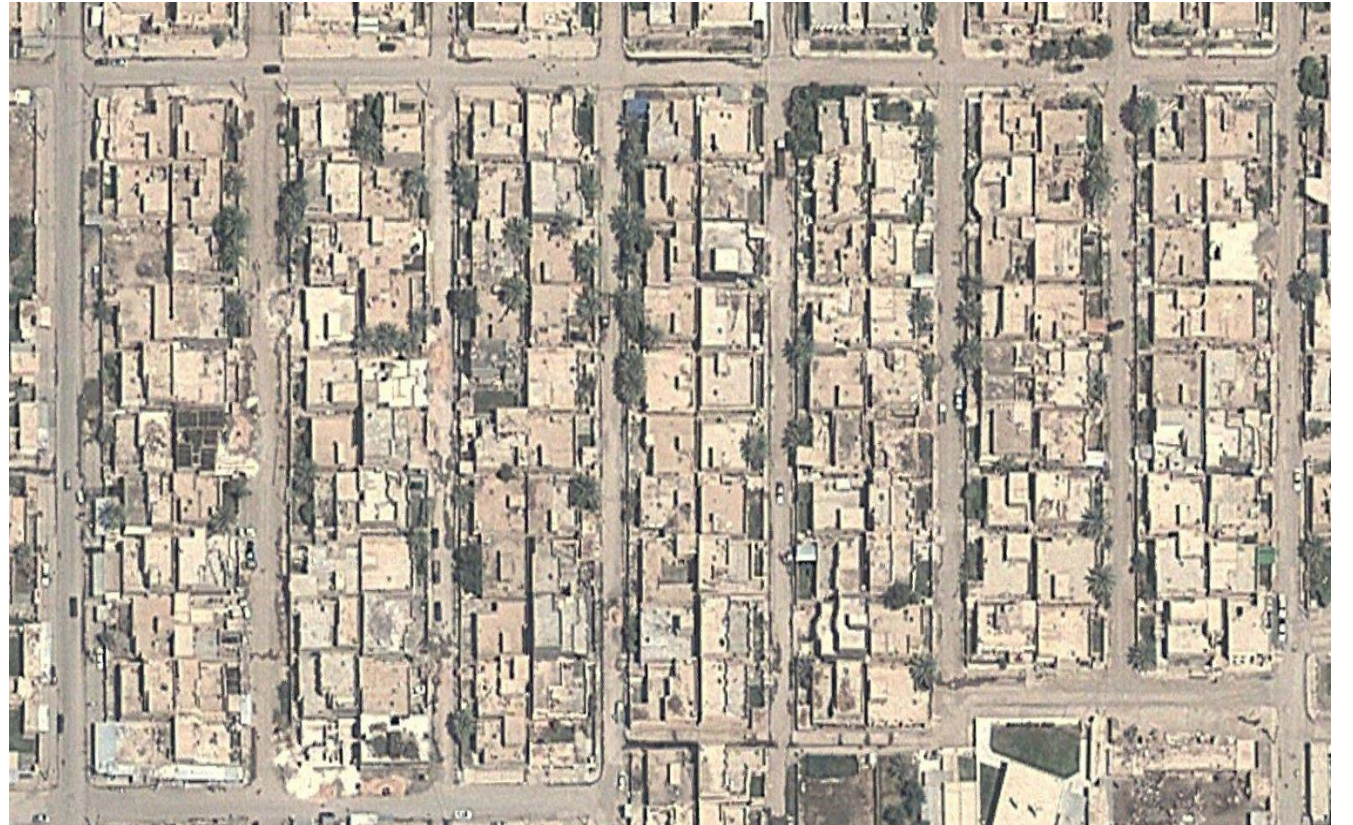
Finding the Bad Guys

- You must act fast
- You need the best tools

Ramadi Iraq

Imagine the daunting task of going door to door of every house searching for bad guys.

What if you told special forces that you had thirty cell phones capable of live high definition video in every room they needed to search?



Pleasant Grove High School

December 3, 2015

The day following a mass shooting in San Bernadino where 14 people were killed.

At 2pm a student says he saw someone with a gun.

The school goes into lockdown.

Nearly 200 officers from neighboring cities arrive.

They begin the search of over 100 classrooms filled with 1,900 students.

You need to know what is going on in each classroom before you enter.



SWAT officer searching a classroom as students remain sitting in their chairs.



Introducing Lockdown

- Wakes up when a shot or loud noise is detected
- Automatically turns on video camera or audio recorder.
- Connects to Lockdown server reporting your position

Lockdown not only gathers data from each student—it can give them instructions on how to get out of harms way.

- Lock yourself in a classroom
- Leave the building
- Active shooter in gym



Lockdown Consoles



Law Enforcement

- Lockdown automatically highlights the most pertinent data (loud noises, requests for help)
- The map shows law enforcement where to go
- Officers click on map to see what is going on inside rooms

Features

- Two way messaging
- Broadcasting
- Feature shutdown (preserve bandwidth by shutting down Pandora)
- File distribution (escape map)

The Technology is Available

- Voice Activation
- Messaging
- HD Video
- Priority Bandwidth
- Data Correlation
- GPS
- Device Support

App Distribution

- Social pressure on Samsung and Apple would incent them to include on every shipped device
- Download anytime including during an actual emergency
 - Apple Store
 - Play Store
- Incentives such as free music can incent students to use Lockdown

Funding

- Government grants
- School support
- Social encouragement/pressure to contribute
- Advertising
- Open source

Use

- Schools
- Malls
- Mass Transit
- Business Offices
- Government
- Military
- Sporting Events

Once Built

- Upload maps of schools and other high occupancy locations
- Acceptance by schools and local law enforcement
- Training
- Develop Standards of Use